



THE  
EDGE  
PIRAEUS



ESTIA  
YOUR TRUSTED DEVELOPER



Your Gateway to Modern Living  
in Piraeus, Athens.



ESTIADDEVELOPMENTS.COM





ESTIADEVELOPMENTS.COM



THE  
EDGE  
PIRAEUS

Estia Developments is proud to present our latest project, “The Edge - Piraeus”. Building on the success of our previous residential project “The Edge in Kallithea”, we have tailored this new project to meet specific upcoming needs of the Greek real estate market.

Located in the heart of Piraeus, just 5 minutes away from the bustling port, “The Edge - Piraeus” offers a unique opportunity to experience modern living in one of Greece’s most vibrant cities. With its strategic location, residents will enjoy easy access to transportation, amenities, and a thriving community.

Don’t miss out on this exciting opportunity to be part of “The Edge - Piraeus.” Contact us today to learn more about this exceptional development and secure your dream home in one of Greece’s most sought-after locations.



Welcome Home



ESTIADEVELOPMENTS.COM





ESTIADEVELOPMENTS.COM



# PIRAEUS

*WHERE ATHENS' RIVIERA BEGINS*

Located right next to the vibrant city of Athens, Piraeus offers a unique opportunity for modern living and prime investment in Greece. With its strategic location as the main port of Athens, Piraeus is a bustling hub of economic activity and a gateway to the Greek market.

Investing in property in Piraeus provides a promising opportunity for high returns on investment. The area is experiencing significant growth and development, making it an attractive choice for investors looking to capitalize on the city's potential. With its thriving economy and strategic location, Piraeus offers a solid foundation for long-term investment success.

In addition to its investment potential, Piraeus also offers a high quality of life for residents. The area boasts a rich history, with charming neighborhoods, picturesque streets, and a vibrant cultural scene. Residents can enjoy a wide range of amenities, including shopping centers, restaurants, cafés, and recreational facilities.

Piraeus is also well-connected to the rest of Athens, making it easy to explore the city and beyond. The area is served by an extensive public transportation network, including buses, trains, and ferries, providing convenient access to the city center and other popular destinations.



LIVE · ENJOY · EXPLORE



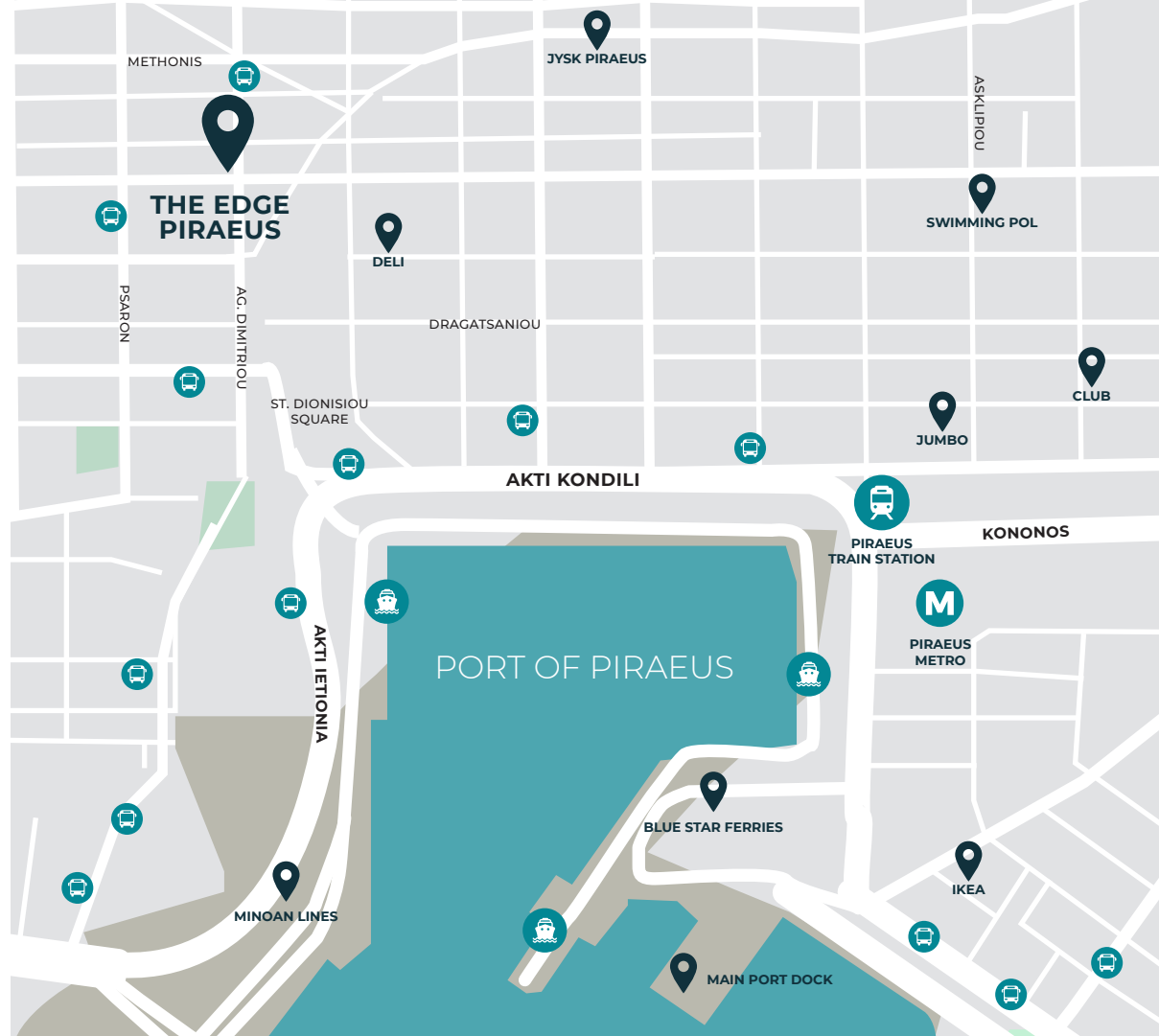
# THE PROJECT NEIGHBORHOOD



## PROXIMITIES

- 50M **BUS STATION**
- 110M **SUPERMARKET**
- 120M **GAS STATION**
- 150M **SOCCER COURT**
- 150M **PRIMARY SCHOOL**
- 170M **RESTAURANT**
- 180M **DOG PARK**
- 230M **BAKERY**
- 450M **PORT PIRAEUS**
- 11KM **CENTER OF ATHENS**
- 41KM **ATHENS INTERNATIONAL AIRPORT**

ESTIADEVELOPMENTS.COM





# THE PROJECT IN THE ATHENIAN RIVIERA

**PIRAEUS PORT**  
450M

**NIARCHOS FOUNDATION  
CULTURAL CENTER**

5.5KM

**ATHENS CENTER  
SYNTAGMA SQ.**

10KM

**THE ELLINIKON  
PROJECT**  
13KM

**GLYFADA**  
17KM

**VOULA**  
19KM

**VOULIAGMENI**  
22KM

←  
TO CORINTH

→  
TO CAPE SOUNION



# THE DEVELOPMENT AT A GLANCE

## THE DEVELOPMENT



NEW  
CONSTRUCTION



ESTIMATED  
DELIVERY  
2025,  
4<sup>TH</sup> QUARTER



PAYMENT  
FACILITIES

## THE UNITS



7 FLOORS



31 APARTMENTS  
3 SHOPS



50-138 SQM  
95-96 SQM



1-4 BEDROOMS

## AMENITIES



GYM



LARGE  
VERANDAS

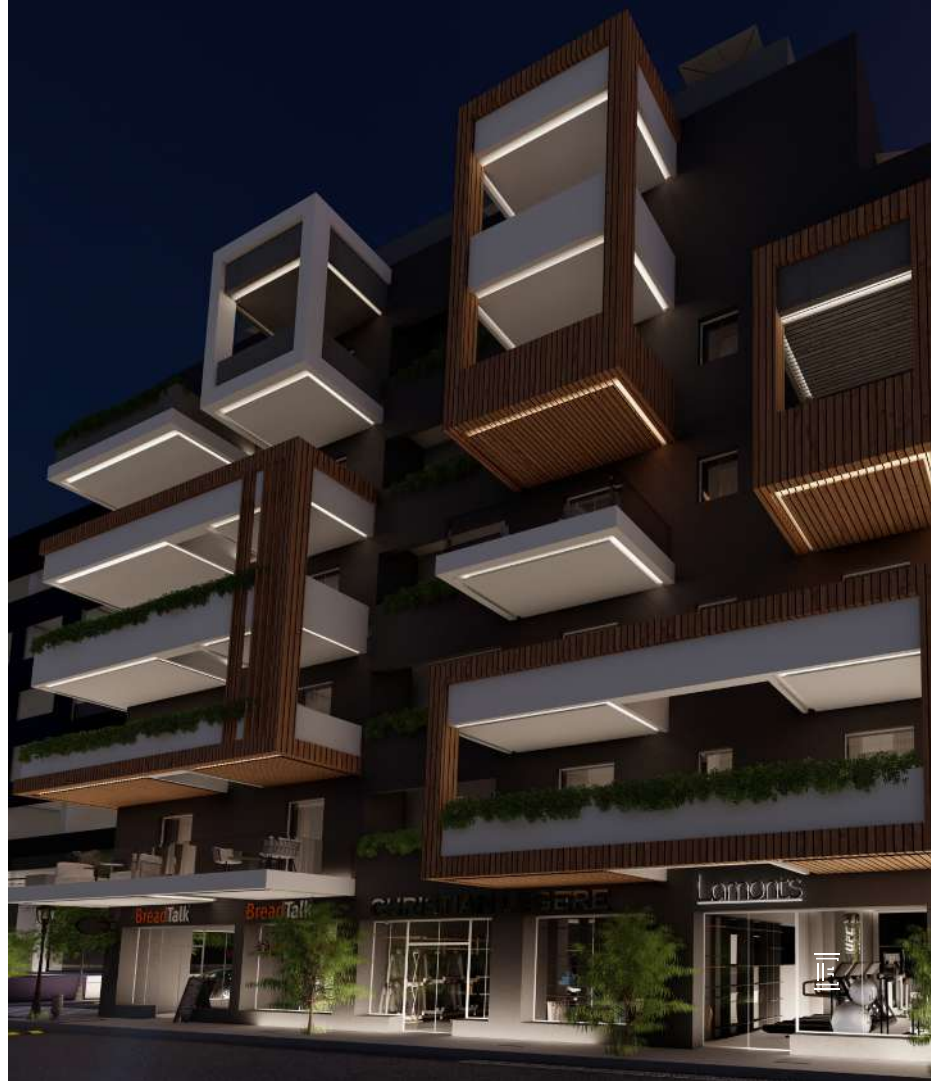


STORAGES



PARKING  
SPACES

[ESTIADEVELOPMENTS.COM](http://ESTIADEVELOPMENTS.COM)



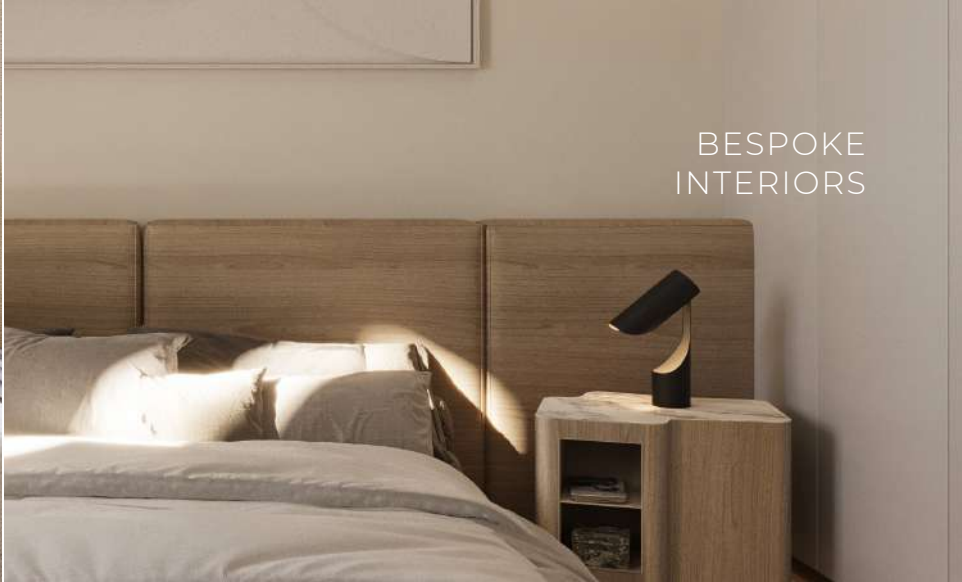
# THE DEVELOPMENT ANALYSIS

7 <sup>TH</sup> FLOOR	<b>Z1</b> INT. SPACES: 59 SQM VERANDAS: 29 SQM 1 BD   1 BTH   1 WC		<b>Z2</b> INT. SPACES: 138 SQM VERANDAS: 98 SQM 4 BD   3 BTH   1 WC								
6 <sup>TH</sup> FLOOR	<b>ST1</b> INT. SPACES: 88 SQM VERANDAS: 27 SQM 3 BD   2 BTH   1 WC		<b>ST2</b> INT. SPACES: 123 SQM VERANDAS: 70 SQM 3 BD   3 BTH		<b>ST3</b> INT. SPACES: 62 SQM VERANDAS: 14 SQM 1 BD   2 BTH						
5 <sup>TH</sup> FLOOR	<b>E1</b> INT. SPACES: 74 SQM VERANDAS: 14 SQM 2 BD   2 BTH		<b>E2</b> INT. SPACES: 86 SQM VERANDAS: 21 SQM 2 BD   2 BTH		<b>E3</b> INT. SPACES: 51 SQM VERANDAS: 11 SQM 2 BD   2 BTH   1 WC		<b>E4</b> INT. SPACES: 67 SQM VERANDAS: 25 SQM 2 BD   2 BTH		<b>E5</b> INT. SPACES: 61 SQM VERANDAS: 11 SQM 1 BD   2 BTH		
4 <sup>TH</sup> FLOOR	<b>D1</b> INT. SPACES: 74 SQM VERANDAS: 15 SQM 2 BD   2 BTH		<b>D2</b> INT. SPACES: 86 SQM VERANDAS: 21 SQM 2 BD   2 BTH		<b>D3</b> INT. SPACES: 50 SQM VERANDAS: 10 SQM 1 BD   1 BTH   1 WC		<b>D4</b> INT. SPACES: 85 SQM VERANDAS: 14 SQM 2 BD   2 BTH   1 WC		<b>D5</b> INT. SPACES: 61 SQM VERANDAS: 11 SQM 1 BD   2 BTH		
3 <sup>RD</sup> FLOOR	<b>C1</b> INT. SPACES: 74 SQM VERANDAS: 15 SQM 2 BD   2 BTH		<b>C2</b> INT. SPACES: 86 SQM VERANDAS: 17 SQM 2 BD   2 BTH		<b>C3</b> INT. SPACES: 50 SQM VERANDAS: 11 SQM 1 BD   1 BTH   1 WC		<b>C4</b> INT. SPACES: 85 SQM VERANDAS: 14 SQM 2 BD   2 BTH   1 WC		<b>C5</b> INT. SPACES: 61 SQM VERANDAS: 14 SQM 1 BD   2 BTH		
2 <sup>ND</sup> FLOOR	<b>B1</b> INT. SPACES: 74 SQM VERANDAS: 15 SQM 2 BD   2 BTH PARKING (P10)		<b>B2</b> INT. SPACES: 86 SQM VERANDAS: 21 SQM 2 BD   2 BTH		<b>B3</b> INT. SPACES: 50 SQM VERANDAS: 11 SQM 1 BD   1 BTH   1 WC PARKING (P12)		<b>B4</b> INT. SPACES: 85 SQM VERANDAS: 25 SQM 2 BD   2 BTH   1 WC PARKING (P9)		<b>B5</b> INT. SPACES: 61 SQM VERANDAS: 32 SQM 1 BD   2 BTH PARKING (P11)		
1 <sup>ST</sup> FLOOR	<b>A1</b> INT. SPACES: 74 SQM VERANDAS: 15 SQM 2 BD   2 BTH PARKING (P7)		<b>A2</b> INT. SPACES: 86 SQM VERANDAS: 18 SQM 2 BD   2 BTH PARKING (P8)		<b>A3</b> INT. SPACES: 50 SQM VERANDAS: 12 SQM 1 BD   1 BTH   1 WC PARKING (P3)		<b>A4</b> INT. SPACES: 76 SQM VERANDAS: 12 SQM 2 BD   2 BTH PARKING (P4)		<b>A5</b> INT. SPACES: 59 SQM VERANDAS: 12 SQM 1 BD   2 BTH PARKING (P6)		<b>A6</b> INT. SPACES: 52 SQM VERANDAS: 12 SQM 1 BD   2 BTH
GROUND FLOOR	<b>S1</b> INT. SPACES: 95 SQM 1 WC 3 X PARKING (P1A, P2A, P1B)		<b>S2</b> INT. SPACES: 95 SQM 1 WC			<b>S3</b> INT. SPACES: 96 SQM 1 WC					
<b>BASEMENT</b> 21 X PARKING SPACES   9 STORAGES											



ESTIADEVELOPMENTS.COM

The modern interior furnishing of the apartments, offered as an extra package, is characterized by sleek and minimalist designs. The focus is on clean lines, open spaces, and a sense of simplicity. The color palette includes neutral tones such as white, gray, and beige, with occasional pops of bold colors for accent pieces. Furniture pieces are typically made of materials like glass, metal, and wood, with a preference for smooth surfaces and geometric shapes. Functionality is key, with storage solutions cleverly integrated into the design. Lighting plays a crucial role, with a combination of natural light and strategically-placed artificial lighting to create a warm and inviting atmosphere.



BESPOKE  
INTERIORS



## ELEGANCE & COMFORT

Each apartment is carefully designed to ensure comfortable living tailored to meet every guest's needs.

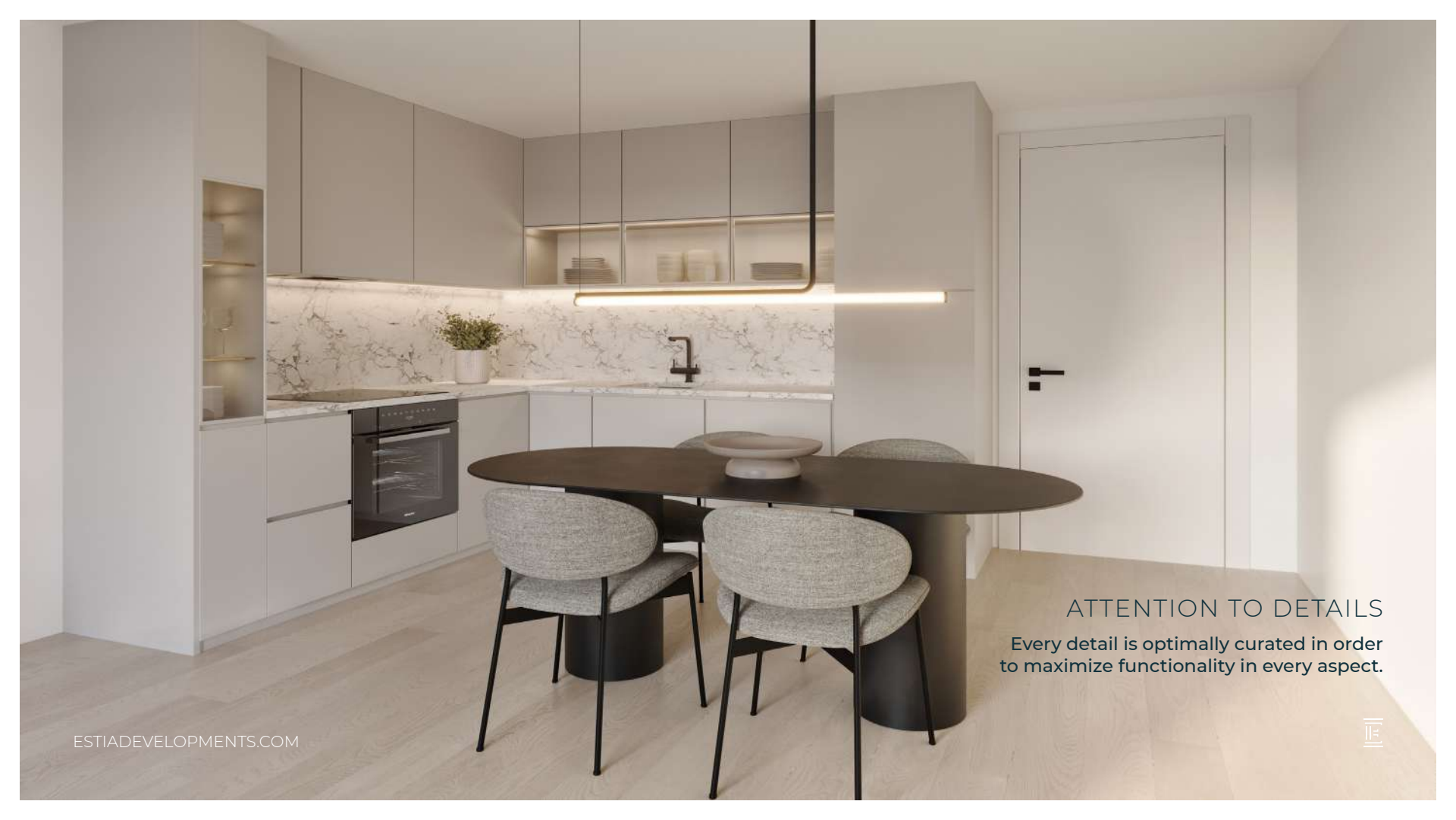




RECREATION  
& RELAXATION







## ATTENTION TO DETAILS

Every detail is optimally curated in order to maximize functionality in every aspect.





ESTIADEVELOPMENTS.COM









# FLOORPLANS

## FLOOR 1 APARTMENT A1



CODE	FLOOR	AREA/ FLOOR (m <sup>2</sup> )	LIVEABLE AREA (m <sup>2</sup> )	BEDROOMS	BATHROOMS	WC	BALCONIES (m <sup>2</sup> )	PARKING SPACES	BASEMENT STORAGE (m <sup>2</sup> )
A1	1 <sup>ST</sup>	74	74	2	2	-	19	1 (P7)	OPTIONAL



# FLOORPLANS

**FLOOR 1**  
APARTMENT A2



CODE	FLOOR	AREA/ FLOOR (m <sup>2</sup> )	LIVEABLE AREA (m <sup>2</sup> )	BEDROOMS	BATHROOMS	WC	BALCONIES (m <sup>2</sup> )	PARKING SPACES	BASEMENT STORAGE (m <sup>2</sup> )
<b>A2</b>	<b>1<sup>ST</sup></b>	<b>86</b>	<b>86</b>	<b>2</b>	<b>2</b>	<b>-</b>	<b>18</b>	<b>1 (P8)</b>	<b>OPTIONAL</b>

# FLOORPLANS

## FLOOR 1 APARTMENT A3



CODE	FLOOR	AREA/ FLOOR (m <sup>2</sup> )	LIVEABLE AREA (m <sup>2</sup> )	BEDROOMS	BATHROOMS	WC	BALCONIES (m <sup>2</sup> )	PARKING SPACES	BASEMENT STORAGE (m <sup>2</sup> )
<b>A3</b>	<b>1<sup>ST</sup></b>	<b>50</b>	<b>50</b>	<b>1</b>	<b>1</b>	<b>1</b>	<b>12</b>	<b>1 (P3)</b>	<b>OPTIONAL</b>

# FLOORPLANS

**FLOOR 1**  
APARTMENT A4



CODE	FLOOR	AREA/ FLOOR (m <sup>2</sup> )	LIVEABLE AREA (m <sup>2</sup> )	BEDROOMS	BATHROOMS	WC	BALCONIES (m <sup>2</sup> )	PARKING SPACES	BASEMENT STORAGE (m <sup>2</sup> )
<b>A4</b>	<b>1<sup>ST</sup></b>	<b>76</b>	<b>76</b>	<b>2</b>	<b>2</b>	<b>-</b>	<b>48</b>	<b>1 (P4)</b>	<b>OPTIONAL</b>

# FLOORPLANS

## FLOOR 1 APARTMENT A5



CODE	FLOOR	AREA/ FLOOR (m <sup>2</sup> )	LIVEABLE AREA (m <sup>2</sup> )	BEDROOMS	BATHROOMS	WC	BALCONIES (m <sup>2</sup> )	PARKING SPACES	BASEMENT STORAGE (m <sup>2</sup> )
A5	1 <sup>ST</sup>	55	55	1	2	-	30	1 (P6)	OPTIONAL

# FLOORPLANS

## FLOOR 1 APARTMENT A6



CODE	FLOOR	AREA/ FLOOR (m <sup>2</sup> )	LIVEABLE AREA (m <sup>2</sup> )	BEDROOMS	BATHROOMS	WC	BALCONIES (m <sup>2</sup> )	PARKING SPACES	BASEMENT STORAGE (m <sup>2</sup> )
A6	1 <sup>ST</sup>	52	52	1	2	-	6	OPTIONAL	OPTIONAL

# FLOORPLANS

**FLOOR 2**  
APARTMENT B1



CODE	FLOOR	AREA/ FLOOR (m <sup>2</sup> )	LIVEABLE AREA (m <sup>2</sup> )	BEDROOMS	BATHROOMS	WC	BALCONIES (m <sup>2</sup> )	PARKING SPACES	BASEMENT STORAGE (m <sup>2</sup> )
<b>B1</b>	<b>2<sup>ND</sup></b>	<b>74</b>	<b>74</b>	<b>2</b>	<b>2</b>	-	<b>15</b>	<b>1 (P10)</b>	<b>OPTIONAL</b>

# FLOORPLANS

**FLOOR 2**  
APARTMENT B2



CODE	FLOOR	AREA/ FLOOR (m <sup>2</sup> )	LIVEABLE AREA (m <sup>2</sup> )	BEDROOMS	BATHROOMS	WC	BALCONIES (m <sup>2</sup> )	PARKING SPACES	BASEMENT STORAGE (m <sup>2</sup> )
<b>B2</b>	<b>2<sup>ND</sup></b>	<b>86</b>	<b>86</b>	<b>2</b>	<b>2</b>	<b>-</b>	<b>21</b>	<b>OPTIONAL</b>	<b>OPTIONAL</b>

# FLOORPLANS

**FLOOR 2**  
APARTMENT B3



CODE	FLOOR	AREA/ FLOOR (m <sup>2</sup> )	LIVEABLE AREA (m <sup>2</sup> )	BEDROOMS	BATHROOMS	WC	BALCONIES (m <sup>2</sup> )	PARKING SPACES	BASEMENT STORAGE (m <sup>2</sup> )
<b>B3</b>	<b>2<sup>ND</sup></b>	<b>50</b>	<b>50</b>	<b>1</b>	<b>1</b>	<b>1</b>	<b>11</b>	<b>1 (P12)</b>	<b>OPTIONAL</b>



# FLOORPLANS

FLOOR 2  
APARTMENT B4



CODE	FLOOR	AREA/ FLOOR (m <sup>2</sup> )	LIVEABLE AREA (m <sup>2</sup> )	BEDROOMS	BATHROOMS	WC	BALCONIES (m <sup>2</sup> )	PARKING SPACES	BASEMENT STORAGE (m <sup>2</sup> )
B4	2 <sup>ND</sup>	84	84	2	2	1	25	1 (P9)	OPTIONAL

# FLOORPLANS

## FLOOR 2 APARTMENT B5



CODE	FLOOR	AREA/ FLOOR (m <sup>2</sup> )	LIVEABLE AREA (m <sup>2</sup> )	BEDROOMS	BATHROOMS	WC	BALCONIES (m <sup>2</sup> )	PARKING SPACES	BASEMENT STORAGE (m <sup>2</sup> )
<b>B5</b>	<b>2<sup>ND</sup></b>	<b>61</b>	<b>61</b>	<b>1</b>	<b>2</b>	<b>-</b>	<b>32</b>	<b>1 (P11)</b>	<b>OPTIONAL</b>

# FLOORPLANS

**FLOOR 3**  
APARTMENT C1



CODE	FLOOR	AREA/ FLOOR (m <sup>2</sup> )	LIVEABLE AREA (m <sup>2</sup> )	BEDROOMS	BATHROOMS	WC	BALCONIES (m <sup>2</sup> )	PARKING SPACES	BASEMENT STORAGE (m <sup>2</sup> )
<b>C1</b>	<b>3<sup>RD</sup></b>	<b>74</b>	<b>74</b>	<b>2</b>	<b>2</b>	<b>-</b>	<b>15</b>	<b>OPTIONAL</b>	<b>OPTIONAL</b>

# FLOORPLANS

**FLOOR 3**  
APARTMENT C2



CODE	FLOOR	AREA/ FLOOR (m <sup>2</sup> )	LIVEABLE AREA (m <sup>2</sup> )	BEDROOMS	BATHROOMS	WC	BALCONIES (m <sup>2</sup> )	PARKING SPACES	BASEMENT STORAGE (m <sup>2</sup> )
<b>C2</b>	<b>3<sup>RD</sup></b>	<b>86</b>	<b>86</b>	<b>2</b>	<b>2</b>	<b>-</b>	<b>17</b>	<b>OPTIONAL</b>	<b>OPTIONAL</b>

# FLOORPLANS

**FLOOR 3**  
APARTMENT C3



CODE	FLOOR	AREA/ FLOOR (m <sup>2</sup> )	LIVEABLE AREA (m <sup>2</sup> )	BEDROOMS	BATHROOMS	WC	BALCONIES (m <sup>2</sup> )	PARKING SPACES	BASEMENT STORAGE (m <sup>2</sup> )
<b>C3</b>	<b>3<sup>RD</sup></b>	<b>50</b>	<b>50</b>	<b>1</b>	<b>1</b>	<b>1</b>	<b>11</b>	<b>OPTIONAL</b>	<b>OPTIONAL</b>

# FLOORPLANS

FLOOR 3  
APARTMENT C4



CODE	FLOOR	AREA/ FLOOR (m <sup>2</sup> )	LIVEABLE AREA (m <sup>2</sup> )	BEDROOMS	BATHROOMS	WC	BALCONIES (m <sup>2</sup> )	PARKING SPACES	BASEMENT STORAGE (m <sup>2</sup> )
C4	3 <sup>RD</sup>	85	85	2	2	1	14	OPTIONAL	OPTIONAL

# FLOORPLANS

## FLOOR 3 APARTMENT C5



CODE	FLOOR	AREA/ FLOOR (m <sup>2</sup> )	LIVEABLE AREA (m <sup>2</sup> )	BEDROOMS	BATHROOMS	WC	BALCONIES (m <sup>2</sup> )	PARKING SPACES	BASEMENT STORAGE (m <sup>2</sup> )
<b>C5</b>	<b>3<sup>RD</sup></b>	<b>61</b>	<b>61</b>	<b>1</b>	<b>2</b>	<b>-</b>	<b>11</b>	<b>OPTIONAL</b>	<b>OPTIONAL</b>

# FLOORPLANS

**FLOOR 4**  
APARTMENT D1



CODE	FLOOR	AREA/ FLOOR (m <sup>2</sup> )	LIVEABLE AREA (m <sup>2</sup> )	BEDROOMS	BATHROOMS	WC	BALCONIES (m <sup>2</sup> )	PARKING SPACES	BASEMENT STORAGE (m <sup>2</sup> )
<b>D1</b>	<b>4<sup>TH</sup></b>	<b>74</b>	<b>74</b>	<b>2</b>	<b>2</b>	-	<b>15</b>	<b>OPTIONAL</b>	<b>OPTIONAL</b>



# FLOORPLANS

**FLOOR 4**  
APARTMENT D2



CODE	FLOOR	AREA/ FLOOR (m <sup>2</sup> )	LIVEABLE AREA (m <sup>2</sup> )	BEDROOMS	BATHROOMS	WC	BALCONIES (m <sup>2</sup> )	PARKING SPACES	BASEMENT STORAGE (m <sup>2</sup> )
D2	4 <sup>TH</sup>	86	86	2	2	-	21	OPTIONAL	OPTIONAL

# FLOORPLANS

**FLOOR 4**  
APARTMENT D3



CODE	FLOOR	AREA/ FLOOR (m <sup>2</sup> )	LIVEABLE AREA (m <sup>2</sup> )	BEDROOMS	BATHROOMS	WC	BALCONIES (m <sup>2</sup> )	PARKING SPACES	BASEMENT STORAGE (m <sup>2</sup> )
<b>D3</b>	<b>4<sup>TH</sup></b>	<b>50</b>	<b>50</b>	<b>1</b>	<b>1</b>	<b>1</b>	<b>10</b>	<b>OPTIONAL</b>	<b>OPTIONAL</b>

# FLOORPLANS

**FLOOR 4**  
APARTMENT D4



CODE	FLOOR	AREA/ FLOOR (m <sup>2</sup> )	LIVEABLE AREA (m <sup>2</sup> )	BEDROOMS	BATHROOMS	WC	BALCONIES (m <sup>2</sup> )	PARKING SPACES	BASEMENT STORAGE (m <sup>2</sup> )
<b>D4</b>	<b>4<sup>TH</sup></b>	<b>85</b>	<b>85</b>	<b>2</b>	<b>2</b>	<b>1</b>	<b>14</b>	<b>OPTIONAL</b>	<b>OPTIONAL</b>

# FLOORPLANS

**FLOOR 4**  
APARTMENT D5



CODE	FLOOR	AREA/ FLOOR (m <sup>2</sup> )	LIVEABLE AREA (m <sup>2</sup> )	BEDROOMS	BATHROOMS	WC	BALCONIES (m <sup>2</sup> )	PARKING SPACES	BASEMENT STORAGE (m <sup>2</sup> )
D5	4 <sup>TH</sup>	61	61	1	2	-	11	OPTIONAL	OPTIONAL

# FLOORPLANS

FLOOR 5  
APARTMENT E1



CODE	FLOOR	AREA/ FLOOR (m <sup>2</sup> )	LIVEABLE AREA (m <sup>2</sup> )	BEDROOMS	BATHROOMS	WC	BALCONIES (m <sup>2</sup> )	PARKING SPACES	BASEMENT STORAGE (m <sup>2</sup> )
E1	5 <sup>TH</sup>	74	74	2	2	-	14	OPTIONAL	OPTIONAL

# FLOORPLANS

**FLOOR 5**  
APARTMENT E2



CODE	FLOOR	AREA/ FLOOR (m <sup>2</sup> )	LIVEABLE AREA (m <sup>2</sup> )	BEDROOMS	BATHROOMS	WC	BALCONIES (m <sup>2</sup> )	PARKING SPACES	BASEMENT STORAGE (m <sup>2</sup> )
<b>E2</b>	<b>5<sup>TH</sup></b>	<b>86</b>	<b>86</b>	<b>2</b>	<b>2</b>	<b>-</b>	<b>21</b>	<b>OPTIONAL</b>	<b>OPTIONAL</b>



# FLOORPLANS

FLOOR 5  
APARTMENT E3



CODE	FLOOR	AREA/ FLOOR (m <sup>2</sup> )	LIVEABLE AREA (m <sup>2</sup> )	BEDROOMS	BATHROOMS	WC	BALCONIES (m <sup>2</sup> )	PARKING SPACES	BASEMENT STORAGE (m <sup>2</sup> )
E3	5 <sup>TH</sup>	51	51	1	1	1	11	OPTIONAL	OPTIONAL

# FLOORPLANS

**FLOOR 5**  
APARTMENT E4



CODE	FLOOR	AREA/ FLOOR (m <sup>2</sup> )	LIVEABLE AREA (m <sup>2</sup> )	BEDROOMS	BATHROOMS	WC	BALCONIES (m <sup>2</sup> )	PARKING SPACES	BASEMENT STORAGE (m <sup>2</sup> )
E4	5 <sup>TH</sup>	67	67	2	2	-	25	OPTIONAL	OPTIONAL



# FLOORPLANS

**FLOOR 5**  
APARTMENT E5



CODE	FLOOR	AREA/ FLOOR (m <sup>2</sup> )	LIVEABLE AREA (m <sup>2</sup> )	BEDROOMS	BATHROOMS	WC	BALCONIES (m <sup>2</sup> )	PARKING SPACES	BASEMENT STORAGE (m <sup>2</sup> )
E5	5 <sup>TH</sup>	61	61	1	2	-	11	OPTIONAL	OPTIONAL

# FLOORPLANS

**FLOOR 6**  
APARTMENT ST1



CODE	FLOOR	AREA/ FLOOR (m <sup>2</sup> )	LIVEABLE AREA (m <sup>2</sup> )	BEDROOMS	BATHROOMS	WC	BALCONIES (m <sup>2</sup> )	PARKING SPACES	BASEMENT STORAGE (m <sup>2</sup> )
ST1	6 <sup>TH</sup>	98	98	3	2	1	27	OPTIONAL	OPTIONAL

# FLOORPLANS

**FLOOR 6**  
APARTMENT ST2



CODE	FLOOR	AREA/ FLOOR (m <sup>2</sup> )	LIVEABLE AREA (m <sup>2</sup> )	BEDROOMS	BATHROOMS	WC	BALCONIES (m <sup>2</sup> )	PARKING SPACES	BASEMENT STORAGE (m <sup>2</sup> )
<b>ST2</b>	<b>6<sup>TH</sup></b>	<b>123</b>	<b>123</b>	<b>3</b>	<b>3</b>	<b>-</b>	<b>70</b>	<b>OPTIONAL</b>	<b>OPTIONAL</b>

# FLOORPLANS

**FLOOR 6**  
APARTMENT ST3



CODE	FLOOR	AREA/ FLOOR (m <sup>2</sup> )	LIVEABLE AREA (m <sup>2</sup> )	BEDROOMS	BATHROOMS	WC	BALCONIES (m <sup>2</sup> )	PARKING SPACES	BASEMENT STORAGE (m <sup>2</sup> )
<b>ST3</b>	<b>6<sup>TH</sup></b>	<b>62</b>	<b>62</b>	<b>1</b>	<b>2</b>	<b>-</b>	<b>14</b>	<b>OPTIONAL</b>	<b>OPTIONAL</b>

# FLOORPLANS

**FLOOR 7**  
APARTMENT Z1



CODE	FLOOR	AREA/ FLOOR (m <sup>2</sup> )	LIVEABLE AREA (m <sup>2</sup> )	BEDROOMS	BATHROOMS	WC	BALCONIES (m <sup>2</sup> )	PARKING SPACES	BASEMENT STORAGE (m <sup>2</sup> )
<b>Z1</b>	<b>7<sup>TH</sup></b>	<b>59</b>	<b>59</b>	<b>1</b>	<b>1</b>	<b>1</b>	<b>28</b>	<b>OPTIONAL</b>	<b>OPTIONAL</b>

# FLOORPLANS

**FLOOR 7**  
APARTMENT Z2



CODE	FLOOR	AREA/ FLOOR (m <sup>2</sup> )	LIVEABLE AREA (m <sup>2</sup> )	BEDROOMS	BATHROOMS	WC	BALCONIES (m <sup>2</sup> )	PARKING SPACES	BASEMENT STORAGE (m <sup>2</sup> )
<b>Z2</b>	<b>7<sup>TH</sup></b>	<b>138</b>	<b>138</b>	<b>4</b>	<b>3</b>	<b>1</b>	<b>98</b>	<b>OPTIONAL</b>	<b>OPTIONAL</b>

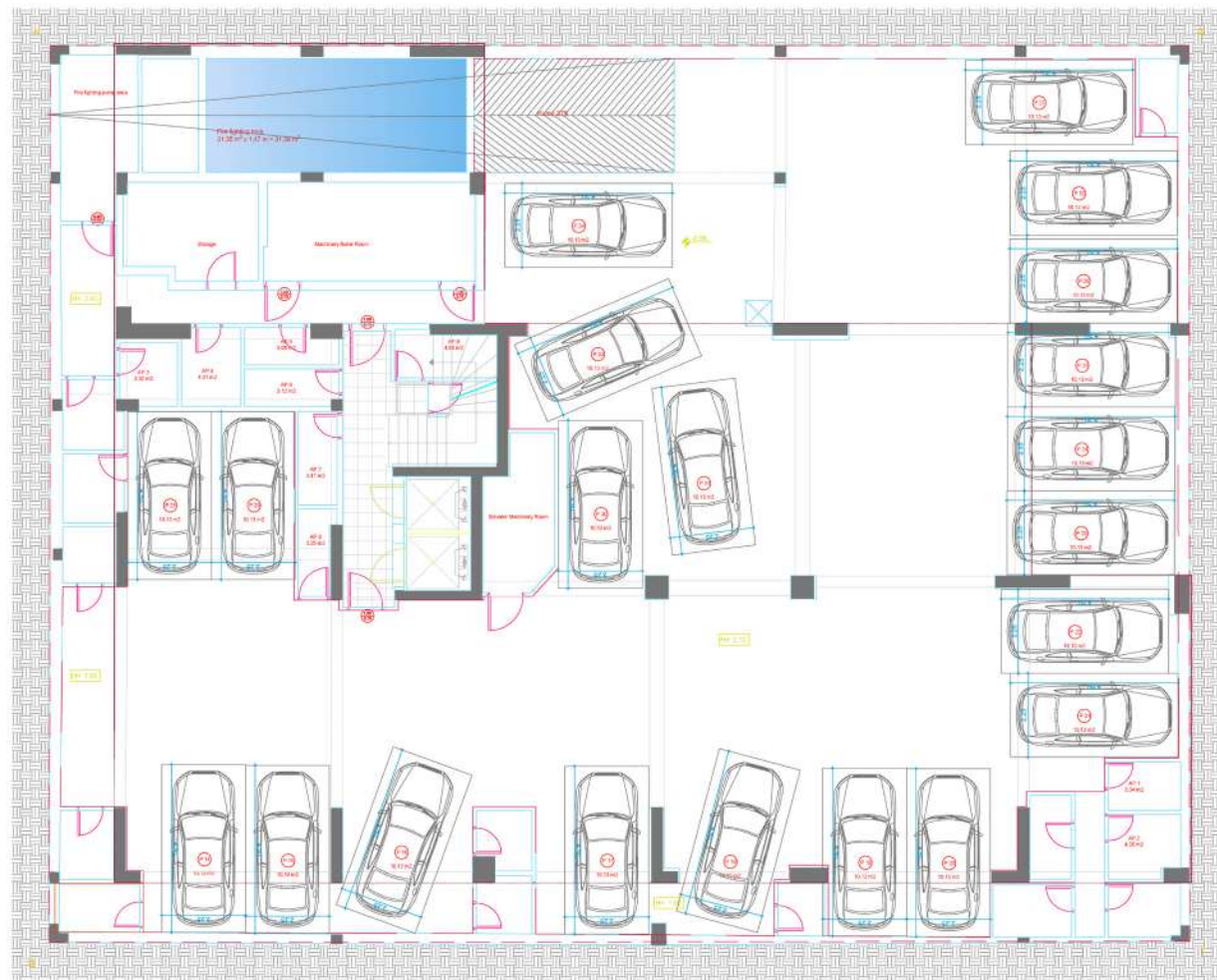
# FLOORPLANS

## GROUND LEVEL



# FLOORPLANS

## BASEMENT





# THE DEVELOPMENT INVENTORY

## BASEMENT STORAGES

CODE	FLOOR	SIZE (m <sup>2</sup> )
AP 1	-1	3
AP 2	-1	4
AP 3	-1	3
AP 4	-1	4
AP 5	-1	3
AP 6	-1	3
AP 7	-1	3
AP 8	-1	3
AP 9	-1	5

## PARKING SPACES

CODE	FLOOR	PARKING PLACE (m <sup>2</sup> )
P14	-1	10
P15	-1	10
P16	-1	10
P17	-1	10
P18	-1	10
P19	-1	10
P20	-1	10
P21	-1	10
P22	-1	10
P23	-1	10
P24	-1	10
P25	-1	10
P26	-1	10
P27	-1	10
P28	-1	10
P29	-1	10
P30	-1	10
P31	-1	10
P32	-1	10
P33	-1	10
P34	-1	10

	CODE	FLOOR	AREA/ FLOOR (m <sup>2</sup> )	LIVEABLE AREA (m <sup>2</sup> )	BEDROOMS	BATHROOMS	WC	BALCONIES (m <sup>2</sup> )	PARKING SPACES	BASEMENT STORAGE (m <sup>2</sup> )
APARTMENTS	A1	1 <sup>ST</sup>	74	74	2	2	-	19	1 (P7)	OPTIONAL
	A2	1 <sup>ST</sup>	86	86	2	2	-	18	1 (P8)	OPTIONAL
	A3	1 <sup>ST</sup>	50	50	1	1	1	12	1 (P3)	OPTIONAL
	A4	1 <sup>ST</sup>	76	76	2	2	-	48	1 (P4)	OPTIONAL
	A5	1 <sup>ST</sup>	55	55	1	2	-	30	1 (P6)	OPTIONAL
	A6	1 <sup>ST</sup>	52	52	1	2	-	6	OPTIONAL	OPTIONAL
	B1	2 <sup>ND</sup>	74	74	2	2	-	15	1 (P10)	OPTIONAL
	B2	2 <sup>ND</sup>	86	86	2	2	-	21	OPTIONAL	OPTIONAL
	B3	2 <sup>ND</sup>	50	50	1	1	1	11	1 (P12)	OPTIONAL
	B4	2 <sup>ND</sup>	84	84	2	2	1	25	1 (P9)	OPTIONAL
	B5	2 <sup>ND</sup>	61	61	1	2	-	32	1 (P11)	OPTIONAL
	C1	3 <sup>RD</sup>	74	74	2	2	-	15	OPTIONAL	OPTIONAL
	C2	3 <sup>RD</sup>	86	86	2	2	-	17	OPTIONAL	OPTIONAL
	C3	3 <sup>RD</sup>	50	50	1	1	1	11	OPTIONAL	OPTIONAL
	C4	3 <sup>RD</sup>	85	85	2	2	1	14	OPTIONAL	OPTIONAL
	C5	3 <sup>RD</sup>	61	61	1	2	-	11	OPTIONAL	OPTIONAL
	D1	4 <sup>TH</sup>	74	74	2	2	-	15	OPTIONAL	OPTIONAL
	D2	4 <sup>TH</sup>	86	86	2	2	-	21	OPTIONAL	OPTIONAL
	D3	4 <sup>TH</sup>	50	50	1	1	1	10	OPTIONAL	OPTIONAL
	D4	4 <sup>TH</sup>	85	85	2	2	1	14	OPTIONAL	OPTIONAL
	D5	4 <sup>TH</sup>	61	61	1	2	-	11	OPTIONAL	OPTIONAL
	E1	5 <sup>TH</sup>	74	74	2	2	-	14	OPTIONAL	OPTIONAL
E2	5 <sup>TH</sup>	86	86	2	2	-	21	OPTIONAL	OPTIONAL	
E3	5 <sup>TH</sup>	51	51	1	1	1	11	OPTIONAL	OPTIONAL	
E4	5 <sup>TH</sup>	67	67	2	2	-	25	OPTIONAL	OPTIONAL	
E5	5 <sup>TH</sup>	61	61	1	2	-	11	OPTIONAL	OPTIONAL	
ST1	6 <sup>TH</sup>	98	98	3	2	1	27	OPTIONAL	OPTIONAL	
ST2	6 <sup>TH</sup>	123	123	3	3	-	70	OPTIONAL	OPTIONAL	
ST3	6 <sup>TH</sup>	62	62	1	2	-	14	OPTIONAL	OPTIONAL	
Z1	7 <sup>TH</sup>	59	59	1	1	1	28	OPTIONAL	OPTIONAL	
Z2	7 <sup>TH</sup>	138	138	4	3	1	98	OPTIONAL	OPTIONAL	
SHOPS	S1	0	95	95	-	-	1	-	3 (P1a, P1b P2a)	OPTIONAL
	S2	0	95	95	-	-	1	-	OPTIONAL	OPTIONAL
	S3	0	96	96	-	-	1	-	OPTIONAL	OPTIONAL

# BUILDING MODERN GREECE

## ESTIA DEVELOPMENTS COMPANY PROFILE

Estia Developments is a prime real estate developer creating design-driven residential properties of the highest quality for families or individuals seeking homes that complement their modern lifestyles.

With a diverse portfolio spanning high-end properties and urban residences, Estia Developments is well-positioned to cater to any lifestyle, whether you prefer the vivid streets of Athens Center or the dreamy South Athens Riviera



# ESTIA DEVELOPMENTS OUR ETHOS

## EXPAND

Estia Developments has widely expanded over the past year with offices in Greece, Portugal, and Lebanon. Our extensive portfolio covers a wide range of properties to cater to all your needs.

## SHAPE

Shaping lifestyles every day, Estia Developments has helped over 2000 people from around the world make their first move into a profitable investment and has provided more than 600 Golden Visas.

## TRANCEND

Estia Developments' unique projects, innovative architecture, and transcending designs aim to redefine the real estate scene in Europe and beyond, taking the urban landscape to the next level.



**CONTACT US**  
TEL +30 211 411 2112  
EMAIL [sales@estiadevelopments.com](mailto:sales@estiadevelopments.com)

7 SPEFSIPPOU KOLONAKI  
ATHENS GREECE

[ESTIADEVELOPMENTS.COM](http://ESTIADEVELOPMENTS.COM)

BreadTalk

BreadTalk

Lenses