



THE
EDGE
CONTEMPORARY LIVING



ESTIA
YOUR TRUSTED DEVELOPER

ESTIA

ABOVE
URBAN LIFE
TO THE BEAT
OF THE CITY





ESTIA
developments.com







AT A GLANCE

THE DEVELOPMENT



ESTIA
COLLECTION



FULL BUILDING
RENOVATION



ESTIMATED
DELIVERY
2021



PAYMENT
FACILITIES

THE UNITS



1960 SQM
TOTAL SELLABLE AREA



7 FLOORS



31 UNITS



19 – 110 SQM
AVAILABLE SIZES

AMENITIES



ROOF
GARDEN



SWIMMING
POOL



JACUZZI



GYM



PARKING
LOTS

KEY FEATURES



GAS
HEATING



LARGE
WINDOWS



SPACIOUS
BALCONIES



HIGH LUMINOCITY



AT A GLANCE

The Edge is a residential development located in Kallithea, close to the city center of Athens. It offers thirty-one apartments spread across seven floors, ranging from one to three bedrooms each. Designed to combine luxury and comfort, The Edge offers some of the most exceptional common-use features.

The roof garden sitting area, the BBQ and the outdoor jacuzzi are ideal to enjoy your leisure time and relax under the Athenian sun. All apartments are elegantly designed to create comfortable living to suit the needs of every family. In addition, each detail is optimally planned in order to maximize functionality in every aspect.

The Edge is an invitation for you to indulge in a space that embraces urban life along with the true beat of the city.



The Edge is within a two minutes walk to Syngrou avenue, one of the main road connecting central Athens to the southern suburbs and seaside. The building is located next to downtown Athens, close to business hubs, entertainment destinations and close to some of the most famous landmarks of Athens.

PREMIUM

AMENITIES



SWIMMING
POOL



ROOF
GARDEN



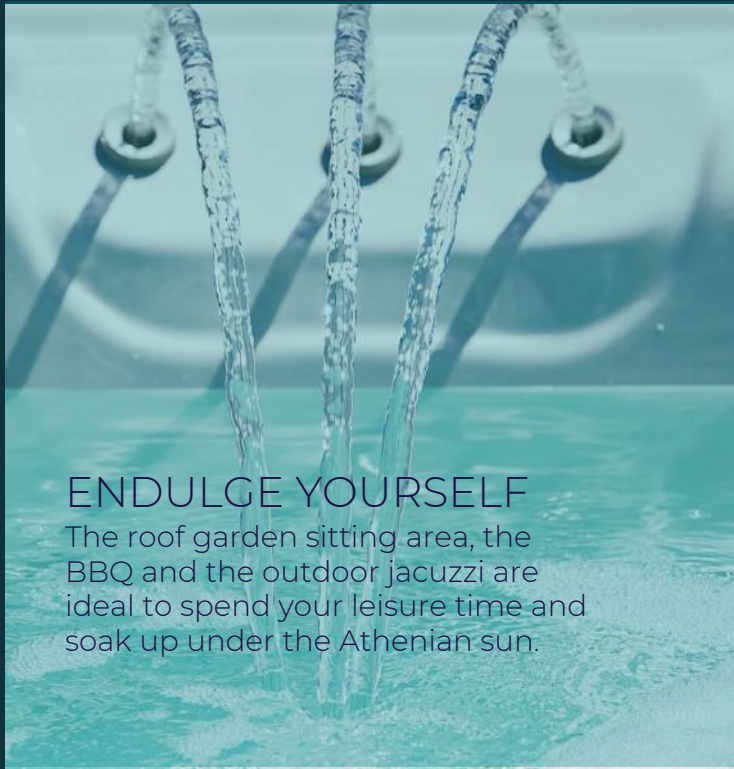
JACUZZI



GYM

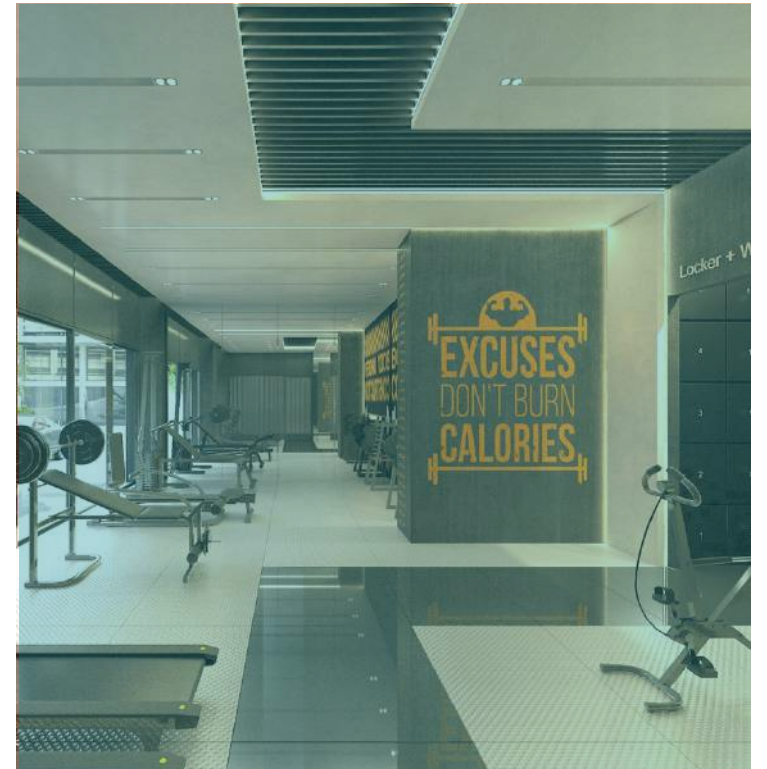


PARKING



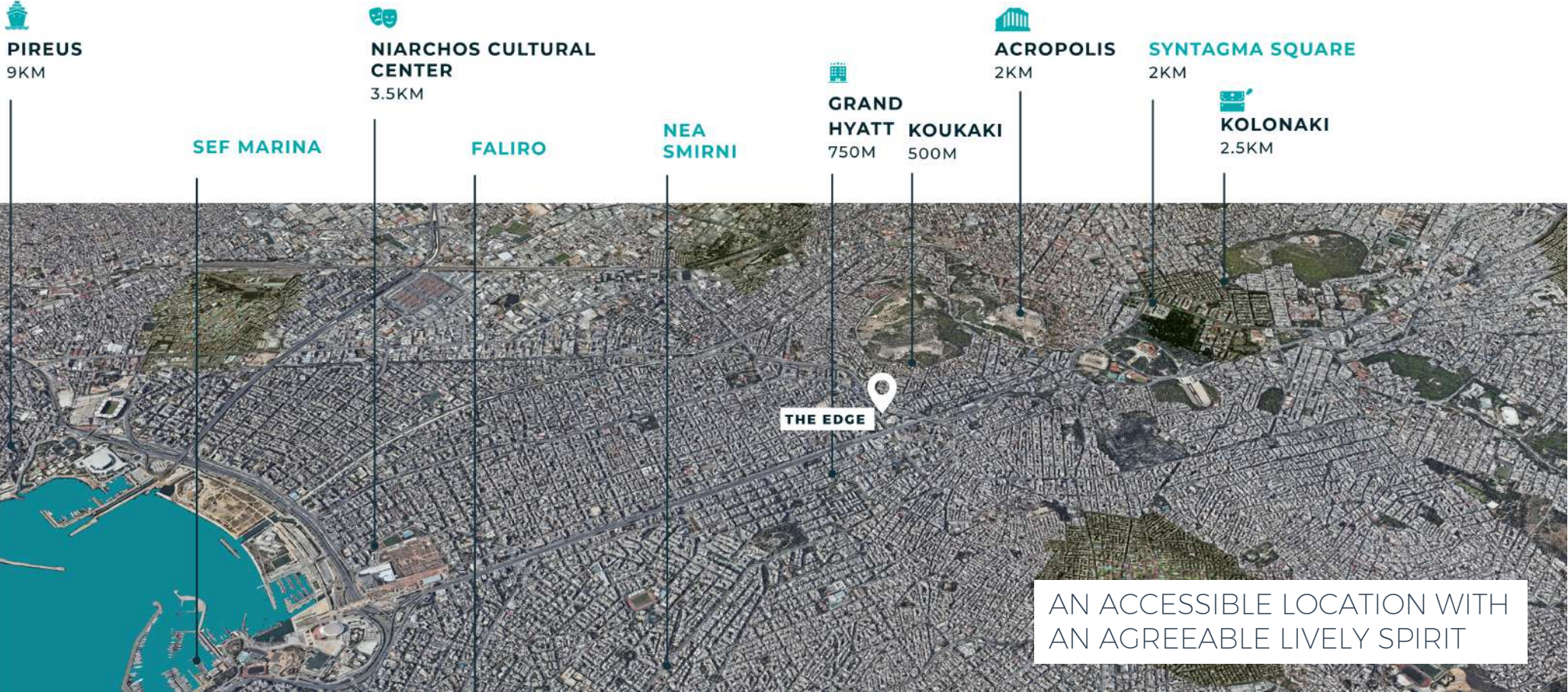
ENDULGE YOURSELF

The roof garden sitting area, the BBQ and the outdoor jacuzzi are ideal to spend your leisure time and soak up under the Athenian sun.



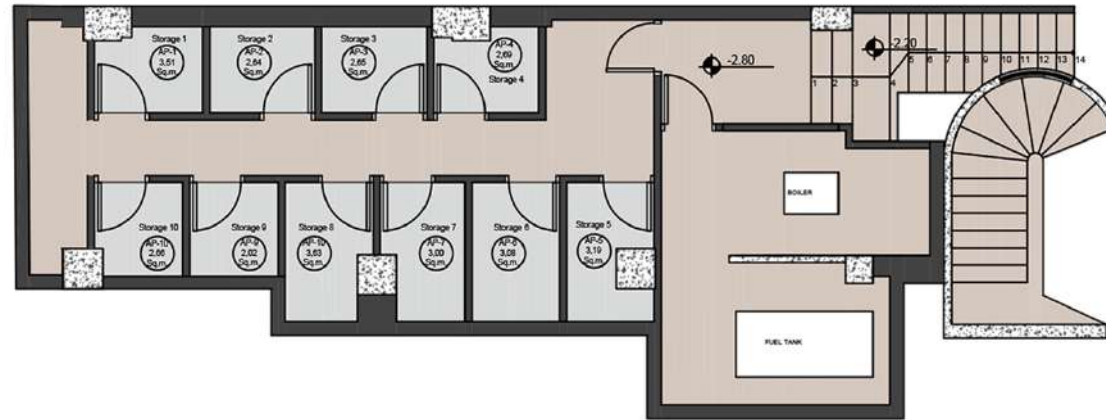
ATHENS PREMIUM

LOCATION



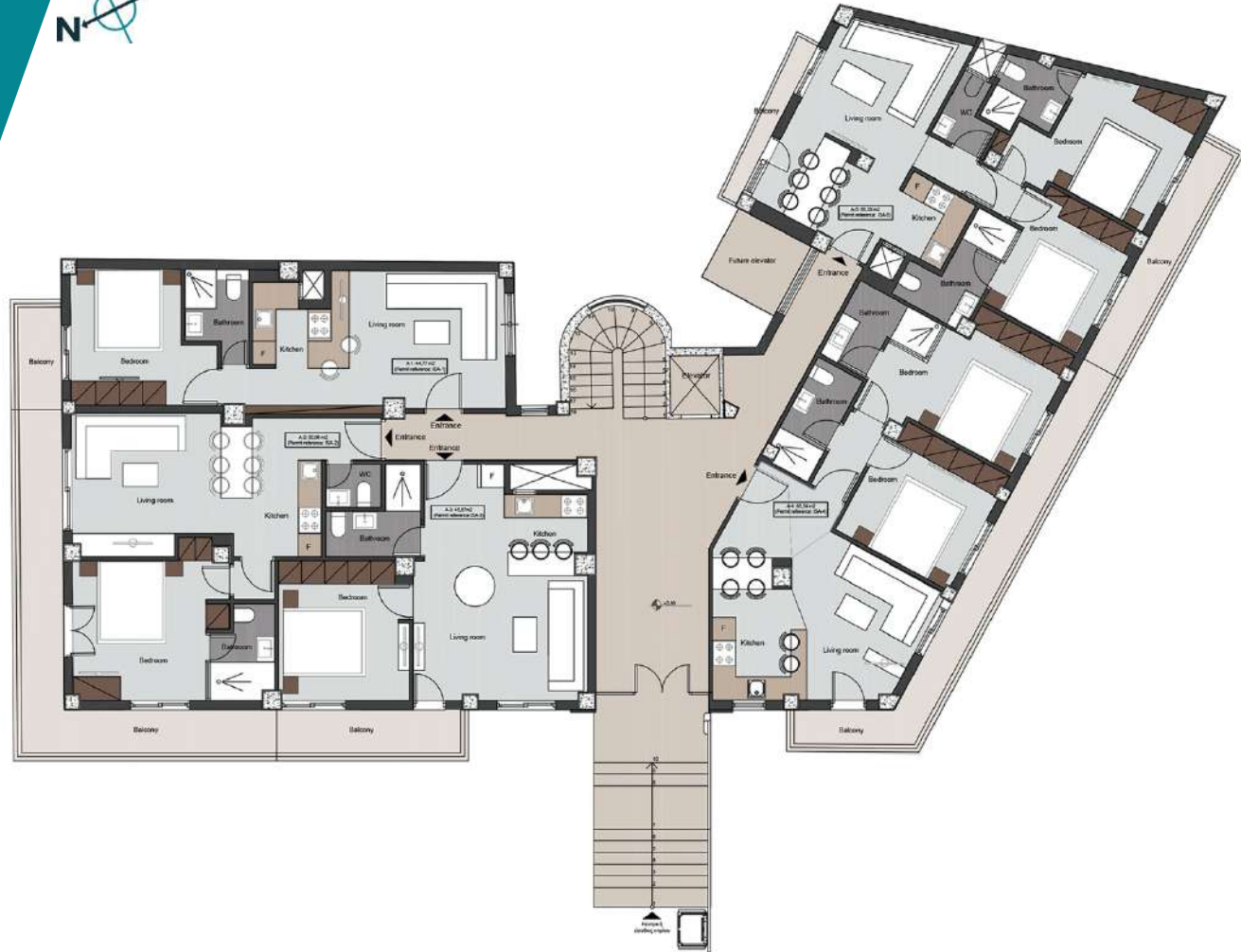
FLOOR PLANS

BASEMENT



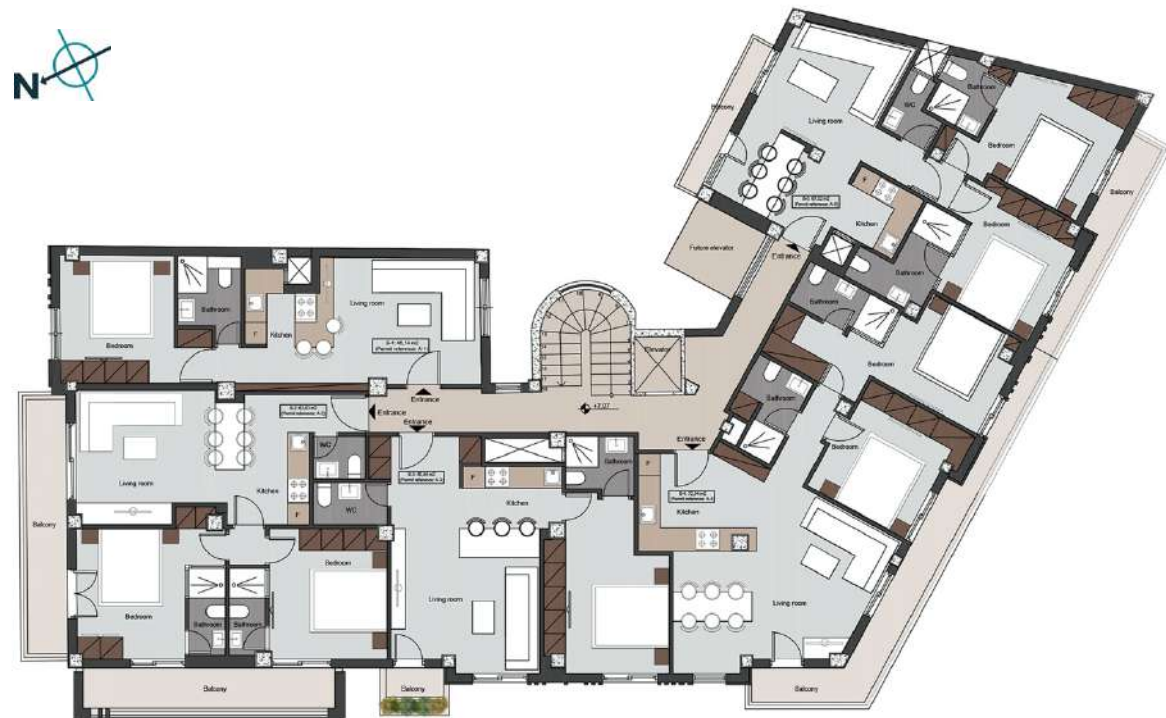
FLOOR PLANS

FIRST FLOOR



FLOOR PLANS

SECOND FLOOR



FLOOR PLANS

THIRD FLOOR



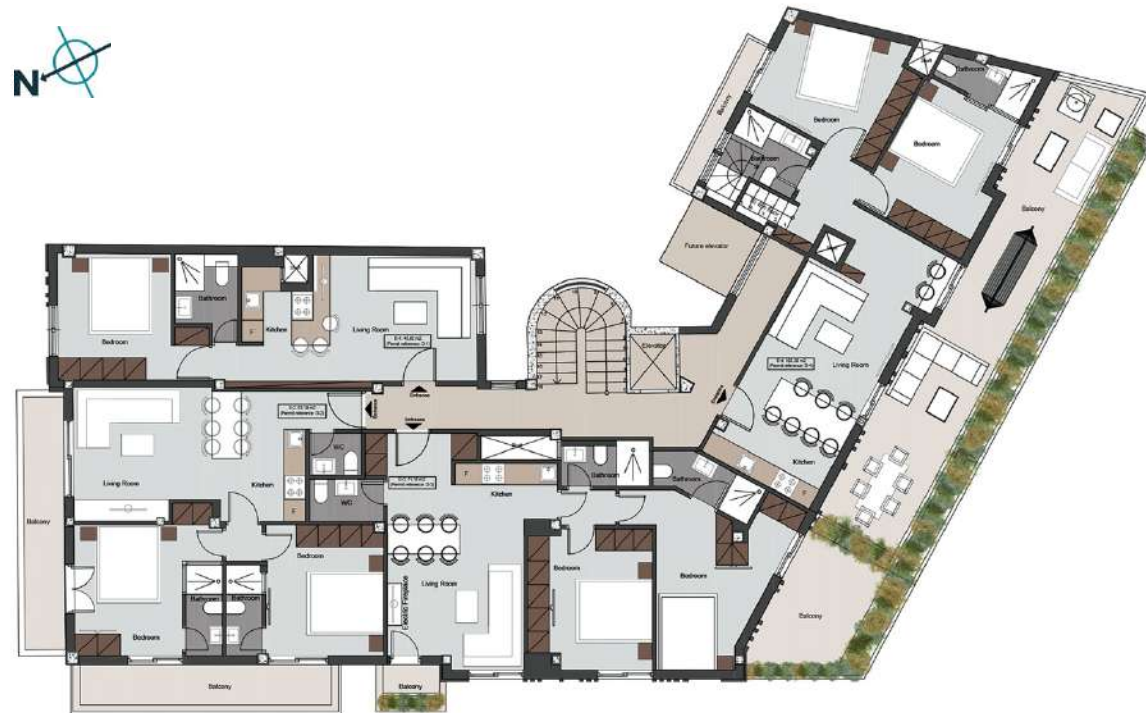
FLOOR PLANS

FOURTH FLOOR



FLOOR PLANS

FIFTH FLOOR



FLOOR PLANS

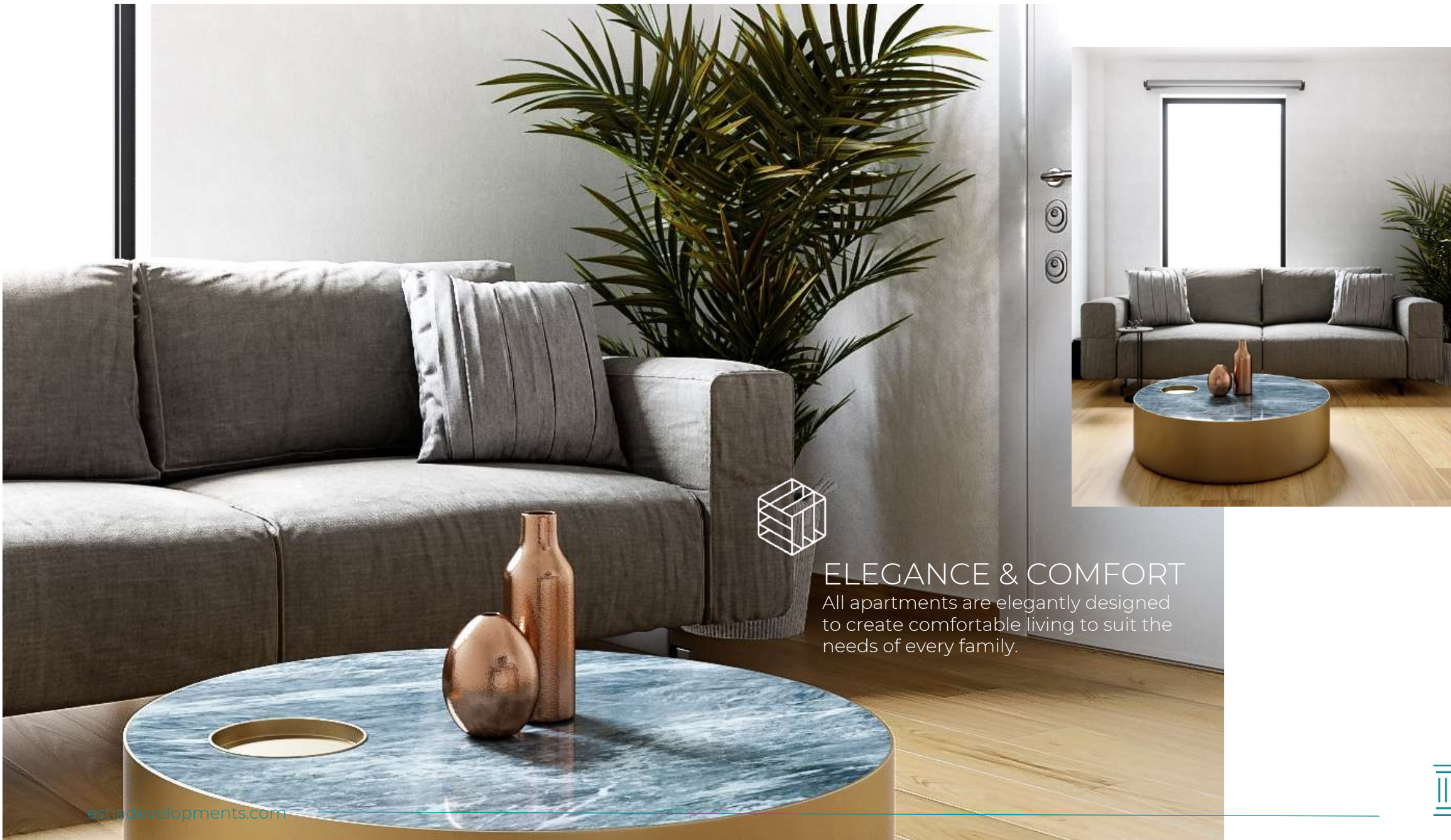
SIXTH FLOOR



FLOOR PLANS

TERRACE





ELEGANCE & COMFORT

All apartments are elegantly designed to create comfortable living to suit the needs of every family.



ATTENTION TO DETAILS

Every detail is optimally curated in order to maximize functionality in every aspect.





[estiadevelopments.com](https://www.estiadevelopments.com)



PLUSH INTERIORS

Come home to your luxurious apartment with tastefully appointed interiors, spacious bedrooms, high-end bathrooms and more.







ESTIA DEVELOPMENTS

COMPANY PROFILE

Estia Developments is a pioneering real estate developer in Greece, Spain and Portugal, specializing in high quality properties and known for its outstanding architecture. Whether you choose downtown Athens, the northern suburbs or the Athenian Riviera, our hand-picked projects offer a wide array of modern lifestyles, shaped with comfortable and innovative designs.



ESTIA DEVELOPMENTS

OUR ETHOS

EXPAND

Estia Developments has widely expanded over the past year with offices in Greece, Lebanon, Hong Kong, China, Spain and Portugal. Our extensive portfolio covers a wide range of properties to cater for all your needs.

SHAPE

Shaping lifestyles every day, Estia Developments has helped over 2000 people from around the world in making their first move into a profitable investment and has provided more than 600 Greek Golden Visas.

TRANSCEND

Estia's unique projects, innovative architecture and transcending design aim to redefine the realty scene in Greece and taking the urban landscape to the next level.



THE
EDGE
CONTEMPORARY LIVING



Contact us at +30 6932391111
or visit estiadevelopments.com

7 Spefsipou, 106 75 Kolonaki, Athens, Greece
info@estiadevelopments.com